



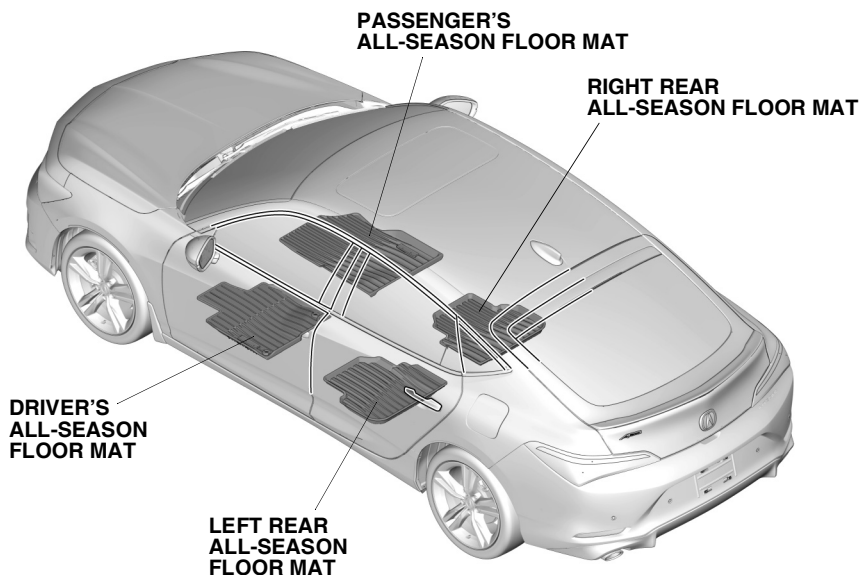
# INSTALLATION INSTRUCTIONS

Accessory  
**ALL-SEASON FLOOR MATS**

Application  
**2023 INTEGRA  
MODEL SERIES**

Publications No.  
**VERSION 1**  
Issue Date  
**MAY 2022**

## GENERAL VIEW



QL61601AU

## FOR YOUR SAFETY (Read carefully.)

### Warning Symbols

**Safety:** Your safety, and the safety of others, is important. To help you make informed decisions about service procedures, we have provided safety messages where appropriate. Of course, it is not practical or possible to warn you about all the hazards associated with servicing a vehicle - you must use your own good judgment.

You will find important safety messages preceded by one of following symbols:

\*All symbols are not used in all installation instructions.

#### **DANGER**

You will be killed or seriously hurt if you do not follow the instructions.

#### **WARNING**

You can be killed or seriously hurt if you do not follow the instructions.

#### **CAUTION**

You can be hurt if you do not follow the instructions.

#### **NOTICE**

Gives advice to prevent damage to the product, vehicle, the environment or other property.

#### **NOTE**

Gives helpful information or instructions to be followed when installing this product.

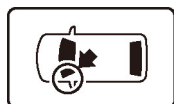


Indicates a prohibited action.

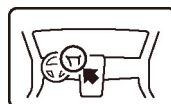
## Procedure and Location Icons

These icons indicate the work location and the worker's point of view.

\*All icons are not used in all installation instructions.



The location on the vehicle.



The location in the vehicle.  
(instrument panel.)



Wear eye protection.



Wear heavy gloves.



Use an assistant.



Place the part on a blanket.



Work perpendicular.



Remove any burrs.



Use touch-up paint and allow to dry.



Tighten to the specified torque.



Apply firm pressure while rolling, especially at the ends, to set the adhesive.



Press firmly.



Clean with isopropyl alcohol.



Return the original part to the client.  
(Do not reuse.)

## Safety: General

- Be careful not to damage the vehicle or the parts.
- The illustrations may differ slightly from the actual accessory.

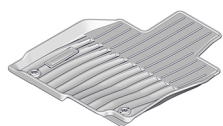
## Safety: Accessory

- Always use the parts and tools specified in the installation instructions.
- When replacing the all-season floor mat, use the factory designed floor mats compatible with the anchors.

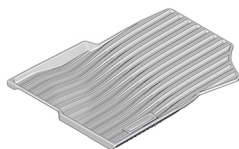
## PARTS LIST

All-season Floor Mats Kit  
(P/N 08P17-3S5-200)  
(P/N 08P17-3S5-200A)

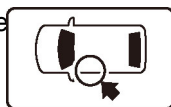
Driver's all-season floor mat



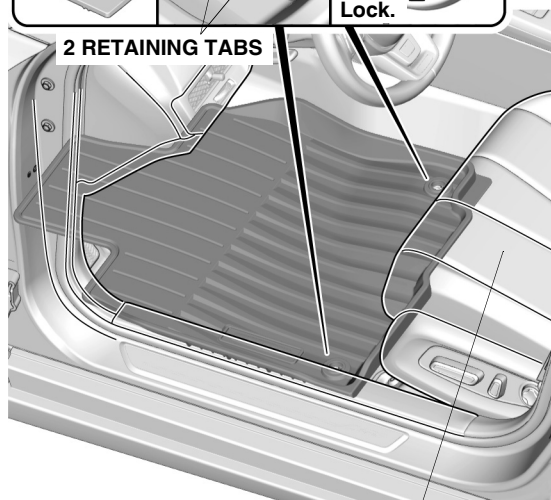
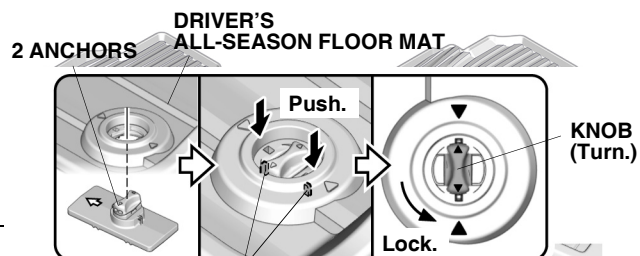
Passenger's all-season floor mat



Left rear floor mat



Right rear all-season floor mat

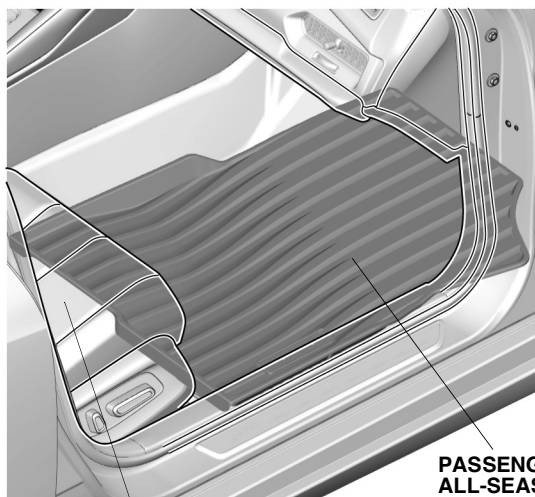
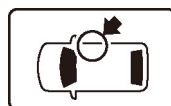


DRIVER'S SEAT QL61602AU

## INSTALLATION

1. Remove the standard floor mats as described in the vehicle owner's manual.
2. Install the driver's all-season floor mat.

3. Install the passenger's all-season floor mat.

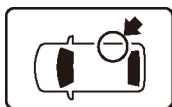


PASSENGER'S SEAT

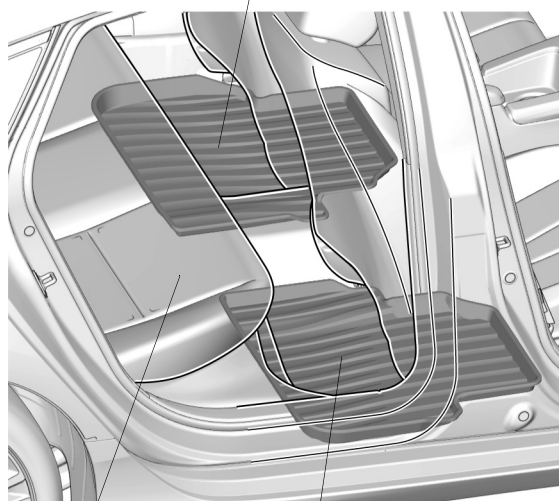
PASSENGER'S ALL-SEASON FLOOR MAT

QL61603AU

4. Install the left and right rear all-season floor mats.



**LEFT REAR  
ALL-SEASON FLOOR MAT**



**REAR SEAT**

**RIGHT REAR  
ALL-SEASON FLOOR MAT**

QL61604AU

5. Check that all parts are installed properly.